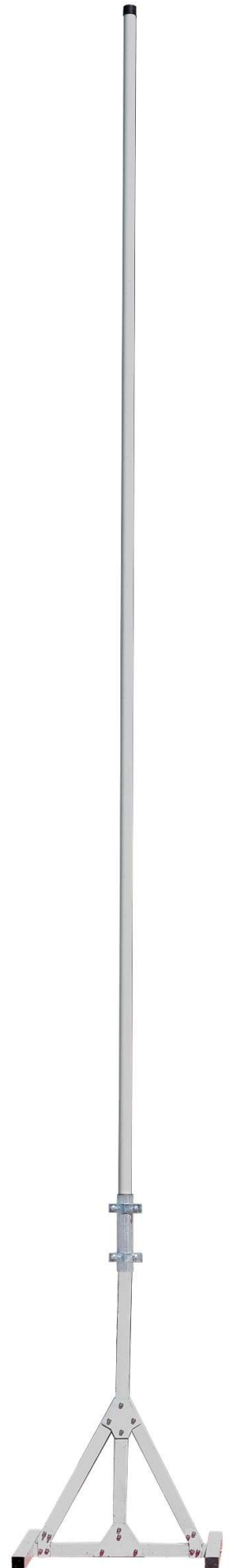


## 163-169 MHz

### REPEATER ANTENNA

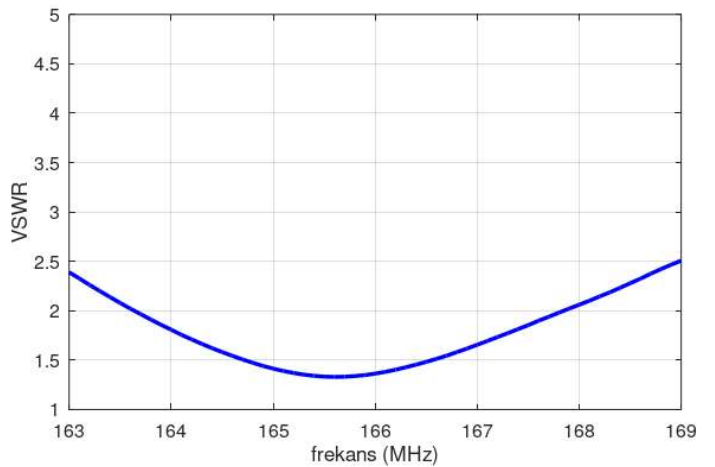
This product is a 5.8 m long collinear monopole antenna operating in the VHF frequency band of 163-169 MHz with a minimum gain of 5 dBd (7.1 dBi). Using a female N-type connector, it is developed for use on fixed sites like base stations, rooftops, ships, and masts as a repeater antenna. Low VSWR and proper material and topology selection in the design of the antenna result in a maximum power handling capability of 500 W. Free mounting at the highest possible location is most preferable for this antenna; otherwise, the VSWR and the radiation pattern will be influenced. Avoid mounting the antenna parallel to and in the proximity of other metal parts. For lightning protection, the antenna consists of a grounded radiator, and therefore it shows a DC short across the input port. A glass fiber tube completely encloses the accurately designed radiating element, as well as the matching circuitry section, to ensure long life in all climates.



## ➤ Technical Specifications

<b>Frequency</b>	163-169 MHz
<b>Impedance</b>	50 Ohm
<b>VSWR</b>	< 2.5:1
<b>Gain</b>	> 5 dBd (7.15 dBi)
<b>Polarization</b>	Linear
<b>Radiation Pattern</b>	Omni
<b>Maximum Power Handling</b>	500 W CW
<b>Connector Type</b>	N-Type (F)
<b>Weight</b>	13 Kg
<b>Height</b>	5.8 m
<b>Operating Temperature</b>	-41 ... +71°C
<b>Storage Temperature</b>	-55 ... +85°C

## ➤ Typical VSWR vs Frequency



## ➤ Technical Dimensions



All dimensions are in mm.